

Gateway UPGRADE NORTH

Date: 24 March 2016
Ref no: CN0026

Gateway Motorway bridges over Sandgate Road/Braun Street and the Shorncliffe rail line: Works scheduled for April

Southbound bridge widening works:

Piling activities for widening the southbound bridge over Sandgate Road/Braun Street are now underway, with drilling and the installation of steel liners for each pile progressing in the North Boondall train station car park.

These works are mainly being undertaken during the day. However, concrete pours for each pile are being undertaken at night when temperatures are cooler to minimise the potential of cracking within the concrete.

In the coming weeks, piling will progress across Sandgate Road/Braun Street and on the approaches at each end of the bridge. These works will be carried out at night when traffic volumes are lower, for the safety of motorists and workers.

Throughout the month, night works will continue to remove concrete edge protection barriers and undertake coring investigations across the bridge structures.

Refer to items A and B on the map on page 3 for more information.

Construction access track and site laydown yard:

During April, a temporary construction access track and site laydown yard will be built on the northern side of the Shorncliffe rail corridor between Boondall and North Boondall train stations (refer to the map right).

Works to establish the temporary access track and laydown yard will include:

- minor vegetation trimming and mowing to allow for construction
- placing and compacting gravels to create the access track and site laydown yard
- installing temporary fencing to separate the access track and secure the laydown yard
- installing signage on site
- installing temporary site facilities within the laydown yard.

Once established, the access track and laydown yard will be used frequently both during the day and at night for nearby works on the bridges over Sandgate Road, Braun Street and the Shorncliffe rail line until 2018.

Shared pathway diversion – between Boondall and North Boondall train stations

From late April until late 2016, the shared pathway between Boondall train station and the pedestrian/cyclist bridge over Cabbage Tree Creek at Deagon will be temporarily closed to all users (refer to the map below).

The closure is required for safety reasons as access cannot be maintained for pedestrians and cyclists beneath the bridges during the upgrade works.

A diversion route will be in place for pathway users alongside the Gateway Motorway and via the Bicentennial Road interchange and Bicentennial Road.

Once the closure and diversion route are implemented, the section of pathway beneath the Gateway Motorway bridges will be removed temporarily to facilitate overhead works.

Refer to the map below and item E on the map on page 3 for more information.



Australian Government

BUILDING OUR FUTURE

transurban



Queensland Government

Gateway Motorway bridges over Sandgate Road/Braun Street and the Shorncliffe rail line: Works scheduled for April

Sandgate Road/Braun Street roadworks:

Temporary road widening works are progressing during the day and at night on Sandgate Road/Braun Street beneath the bridges.

Once these works are complete later this month, both directions of traffic will be moved onto the widened sections of road.

This will allow a work site to be set up within the centre median for bridge widening works. Traffic barriers and screening will be put in place to separate the work site from motorists.

Once the work site is established, night works will be carried out to remove the concrete centre median, guardrail and lighting.

Saw cutters, jackhammers, excavators and trucks will be used to complete this work. Increased noise can be expected during these works.

Refer to item D on the map on page 3 for more information.

Shorncliffe rail corridor works 2 - 4 April:

A Queensland Rail shutdown of the Shorncliffe rail corridor is scheduled from 2am Saturday 2 April until 12am Monday 4 April.

During the shutdown period, the project team will undertake continuous works on the Gateway Motorway bridges within the rail corridor.

Works will include the removal of concrete edge protection barriers, coring investigations and other inspections across the bridge structures.

Refer to item F on the map on page 3 for more information.

For more information about works detailed in this notification, please visit the **News** section on the project website at www.gatewayupgradenorth.com.au

Working hours:

A combination of day and night works will be required to complete these activities with day works undertaken wherever possible.

However, due to the nature of these activities and their proximity to live traffic, some works must be carried out at night when traffic volumes are lower, for the safety of motorists and workers.

The project's working hours include:

- **Day works:** Monday to Friday, 7am to 6pm and Saturday from 8am to 1pm.
- **Motorway night works:** Sunday to Thursday, 7pm to 5am.
- **Local road night works:** Monday to Friday, 8pm to 5am and Saturday to Sunday, 4pm to 5am.

All works are subject to weather and construction conditions permitting.

What to expect:

- Increased noise levels due to the use of heavy machinery used in bridge and roadworks construction.
- Low levels of vibration during some construction activities.
- Use of temporary lighting towers to light work areas and compounds/laydown yards at night.
- Increased construction traffic accessing work areas and site compounds with flashing lights and reversing beepers for safety reasons.
- Frequent vehicle movements along the construction access track during the day and at night.
- Localised traffic changes on the Gateway Motorway, Sandgate Road and Braun Street, including placement of traffic barriers and other traffic control devices, lane closures, temporary traffic stoppages, reduced speed limits and police/traffic control.
- Localised pedestrian/cyclist changes on the footpaths and shared pathway beneath the bridges. Signage and traffic controllers will be in place to direct users safely through work areas.
- Temporary removal of some on-street car parking on Sandgate Road, Braun Street and within the North Boondall train station car park.

Contact details

The project team is committed to working with the community to better understand your views and ensure the successful delivery of the Gateway Upgrade North project.

You can contact the project team via:

✉ contactus@gatewayupgradenorth.com.au

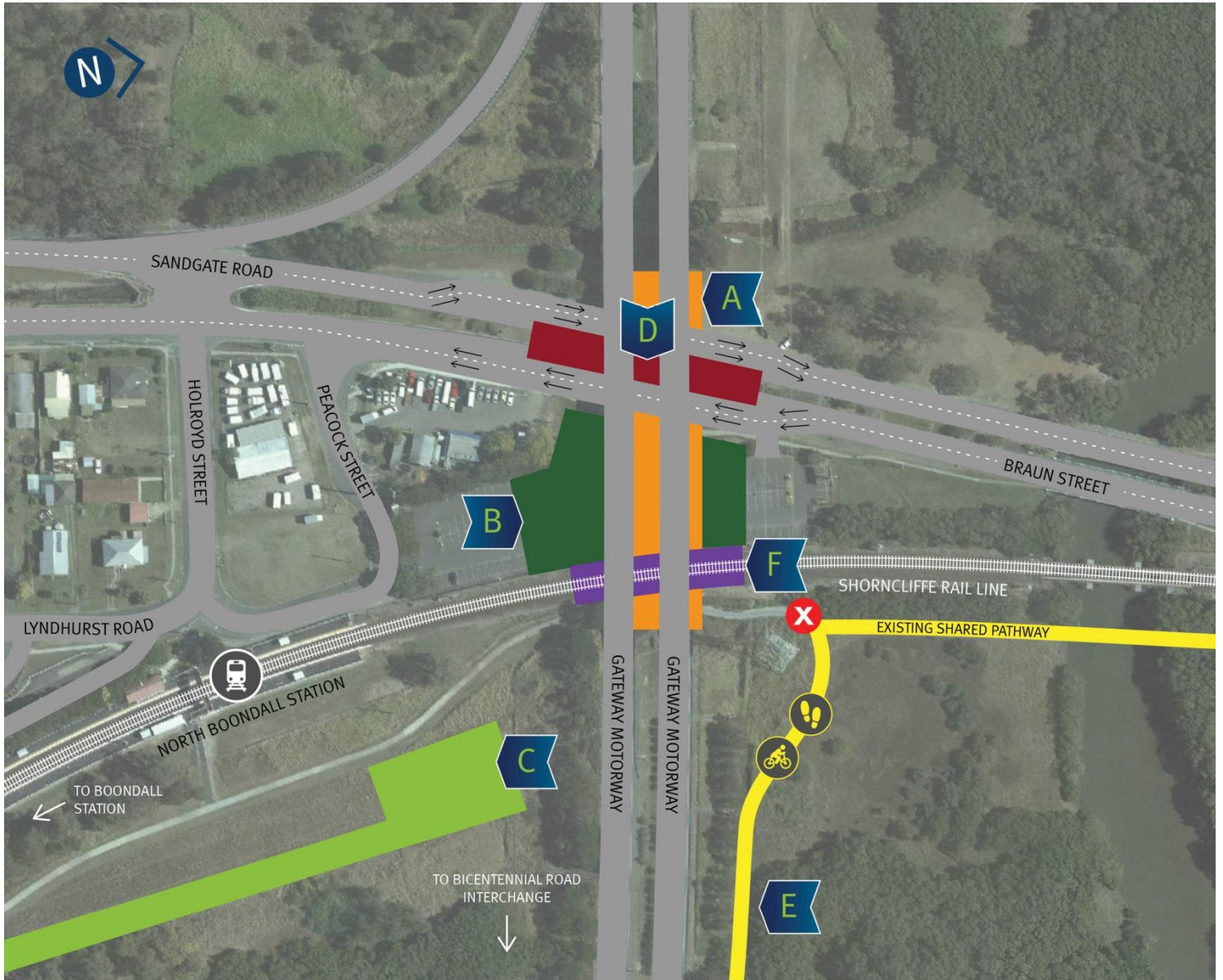
☎ 1800 607 755 (freecall)

🌐 www.gatewayupgradenorth.com.au

For up-to-date project information and to subscribe to project updates visit www.gatewayupgradenorth.com.au and click on the subscribe link.

*Free call from anywhere in Australia, call charges apply for mobile phones and payphones. Check with your service provider for call costs.

Gateway Motorway bridges over Sandgate Road/Braun Street and the Shorncliffe rail line: Works scheduled for April



A Southbound bridge widening works
 Widening the existing Gateway Motorway southbound bridge from two lanes to three.

B North Boondall station work site
 Work site within the North Boondall train station car park during southbound bridge widening works.

C Construction access track and site laydown yard
 Establishment of a site compound and construction access track between Boondall and North Boondall stations.

D Sandgate Road/Braun Street roadworks
 Temporary road widening works on Sandgate Road/Braun Street beneath the Gateway Motorway bridges.

E Shared pathway diversion
 Shared pathway temporarily closed between Boondall and North Boondall stations. Pedestrians/cyclists to follow diversion route (refer to the map on page 1).

F Shorncliffe rail corridor works
 Continuous works within the Shorncliffe rail corridor, beneath the Gateway Motorway bridges from 2-4 April.